

ID REQUIREMENTS AND 2022 DIRECTIONS

ID REQUIREMENTS WHEN TRAVELING TO/FROM MEXICO:

Mexican authorities require that you hold a valid passport while in Mexico (no Sentri or Global Entry cards). U.S. citizens need to present either **a passport, passport card, or Sentri/Global Entry card when returning to the U.S.**

Directions to Building Site in Tijuana, Mexico:

Take either I-5 or I-805 South to the 905 FREEWAY EAST towards Otay Mesa and the USA/Mexico Border. When you cross the Border, you will go through an area that says 'Nada qué declarar' (Nothing to Declare). Depending on whether you get a green light or red light, proceed forward.

- If you get the green light, proceed straight ahead.
- If you get a red light, pull over to the right-hand side for inspection, and the officials will inspect your car. You can claim \$300 of personal belongings.

If they ask, tell them you are volunteers building a house for poor people in Tijuana.

Once through the customs area **continue straight onto the bridge and pull over** to wait for the rest of the cars in your caravan.

Drive over the bridge and continue straight through the intersection at the arches.



Note 1: You will be crossing in front of the cars in line for the border and they are hesitant to let people through. Be persistent. You can wait along the side of the road after crossing through the traffic. At the end of the block **turn left at the signal light** onto the Industrial boulevard ((Alberto Limón Padilla Blvd). This intersection is about a mile from the border.

Note 2: Sometimes the intersection at the arches is blocked off by the police for traffic flow purposes. If blocked, turn right, then the first left at stop sign, and left again at the light. You will then be on Industrial Blvd.



Once on the Industrial boulevard, **continue straight** towards the "Tecate Cuota 2" (Toll Road).



After a short distance on the boulevard, there will be a split in the road with an exit down to the right – **remain in the left lanes and pass over the bridge** – continue toward "Tecate Cuota Toll Road". Continue through the industrial area. You'll be on this boulevard for about 5.6 miles.



Once you have passed through the industrial area and the twin towers monument, **the road will become "Tecate Cuota Highway 2."** Proceed straight following the signs to the Tecate / Mexicali Cuota (toll road).



Continue straight onto Tecate/Mexicali Cuota Highway 2. Pay toll of 140 Pesos (@\$7) upon entering the toll road. You can pay in U.S. dollars, but any change will be in pesos.

Drive on the toll road for 10.3 miles.



Take the Tijuana Libre Rte 2 exit.

Note that Google Maps may try to route you via an earlier exit. This route is along a dirt road and not recommended.



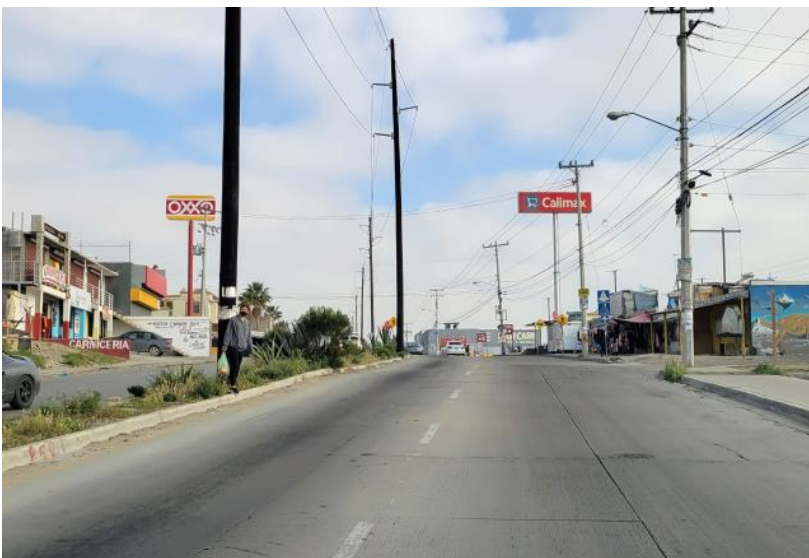
After exiting toll road, continue straight (south) on Hwy 2 **for 3.3 miles**, passing the Toyota plant on the right.



Turn right at the first, functioning traffic light fully past the Toyota plant (3.3 miles from the toll road).

32°29.2400'N 116°43.2550'W

<http://maps.google.com/maps?q=32.48734%2C-116.72092>



Continue straight, winding your way through a government housing area, for 2 miles.



Watch for the OXXO / Tesoro gas station on the right, then turn right.

32°30.7740'N 116°44.1300'W

<http://maps.google.com/maps?q=32.51291%2C-116.73551>



If you see this arch, you've gone too far. Return to the gas station.



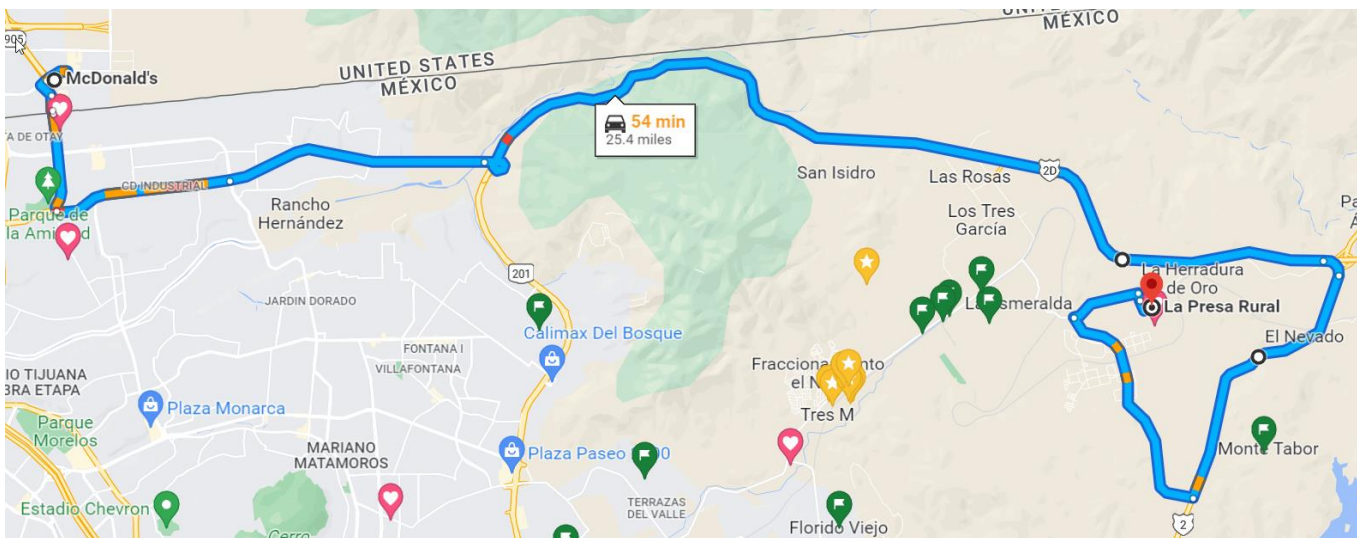
Continue straight on Del Alamo for 1 mile, passing a 7-11 store, and transitioning onto a dirt road.

The pink building ahead is the entrance to the Rinconcito colonia.

32°30.9020'N 116°43.7230'W

<http://maps.google.com/maps?q=32.51505%2C-116.72871>

Follow the detail map provided by Devin.



Return to the States



Follow the directions in reverse order. After exiting the build site, **turn left** at the Tesoro gas station and go approx. **2 miles** to the main road (Hwy 2 Libre). Turn **left** at the traffic light.

Continue on this road for about 3.3 miles.

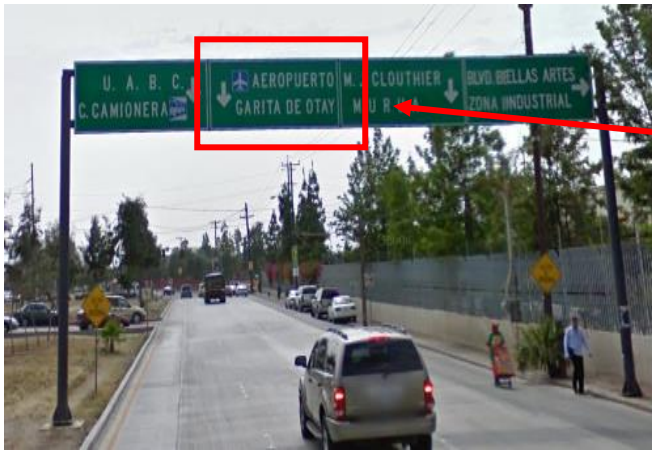
Follow the sign for the toll road, bearing right onto the clover leaf. Drive west on the toll road for 10.5 miles.



After paying toll, bear right and **follow the sign to Tijuana / San Diego I-5.**



You are now on Industrial Blvd towards the border.



Go about **5.5 miles** into the industrial area until you reach the park on the right. Continue straight ahead about 1 mile, **following the signs for Garita de Otay.**



Just past the McDonalds, **turn right at "Garita De Otay/Vehiculos Ligeros" intersection.** Continue straight, up over the bridge until you reach the Otay Border crossing lines.



For those with a Global Entry/SENTRI pass, follow the signs to Bella Artes Blvd. Turn left at the traffic light onto Bella Artes boulevard. Drive about 1.5 miles on Bella Artes and watch for the border entry on the right. The SENTRI lane is in the middle. Note that all passengers in the vehicle must have a Global Entry/SENTRI pass to use these lanes, and the vehicle must be registered as well.