

ID REQUIREMENTS AND DIRECTIONS

ID REQUIREMENTS WHEN TRAVELING TO/FROM MEXICO:

Mexican authorities require that you hold a valid passport while in Mexico (no passport card, Sentri or Global Entry cards). U.S. citizens need to present either **a passport, passport card, or Sentri/Global Entry card when returning to the U.S.**

Directions to Building Site in Tijuana, Mexico:

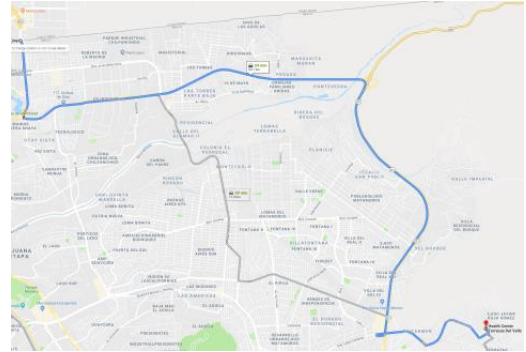
Take either I-5 or I-805 South to the 905 FREEWAY EAST towards Otay Mesa and the USA/Mexico Border. When you cross the Border, you will go through an area that says 'Nada qué declarar' (Nothing to Declare). Depending on whether you get a green light or red light, proceed forward.

- If you get the green light, proceed straight ahead.
- If you get a red light, pull over to the right-hand side for inspection, and the officials will inspect your car. You can claim \$300 of personal belongings.

If they ask, tell them you are volunteers building a house for poor people in Tijuana.

Once through the customs area **continue straight onto the bridge and pull over** to wait for the rest of the cars in your caravan.

Drive over the bridge and continue straight through the intersection at the arches.



Note 1: You will be crossing in front of the cars in line for the border and they are hesitant to let people through. Be persistent. You can wait along the side of the road after crossing through the traffic. At the end of the block **turn left at the signal light** onto the Industrial boulevard ((Alberto Limón Padilla Blvd). This intersection is about a mile from the border.

Note2: Sometimes the intersection at the arches is blocked off by the police for traffic flow purposes. If blocked, turn right, then the first left at stop sign, and left again at the light next to Carl's JR. You will then be on Industrial Blvd.



Once on the Industrial boulevard, **continue straight** towards the "Tecate Cuota 2" (Toll Road).



After a short distance on the boulevard, there will be a split in the road with an exit down to the right – **remain in the left lanes and pass over the bridge** – continue toward "Tecate Cuota Toll Road". Continue through the industrial area. You'll be on this boulevard for about 5.5 miles.

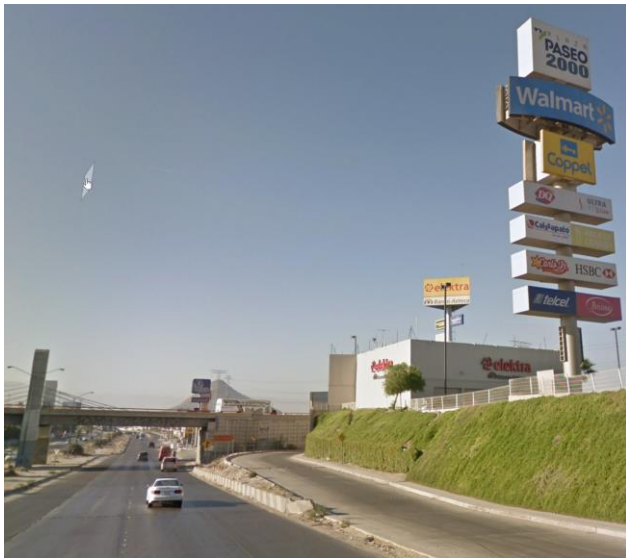
Once you have passed through the industrial area and the twin towers monument, **the road will become "Tecate Cuota Highway 2."** Proceed straight as the next exit will be a few miles ahead.



Drive approx. 3.5 miles and turn right at the "M. Matamoros/ Rosarito" exit. This is the last exit before entering the Tecate Cuota Toll Road.



Drive through the hills, industrial area and shopping centers for about 4 miles. Watch for the Home Depot on the right.



Shortly after passing the Home Depot and Walmart signs you will see a **bridge**



Immediately after passing under the bridge, turn right and follow the curve around.



At the end of the curve, turn right again and cross over the bridge you just went under.



Continue $\frac{3}{4}$ mile, watching for a **CHEVRON** gas station on the left and a Queso (cheese) store in front of you.



Turn **LEFT** just beyond the Chevron station and continue on Paseo de Las Lomas for about a mile.



You will pass a (closed) store called LA VILLA as a landmark on the right. **There is usually a street market in this area on Saturday's** so proceed with care.



Shortly beyond, watch for the **ROMA Farmacia** on the right (and another Queso store at the intersection on the left).



At that intersection, turn left onto Hacienda de Las Palmeras NTE.



Note: You may have received specific directions to your site beforehand. If not, proceed to the staging area in front of the medical clinic and we will guide you to your site.

After a short distance (@ 0.1 miles), you will come to a "Tee". Turn right and then immediately left (see image below)



You will see a small medical clinic with a parking lot in front. This is the Baja Challenge 2019 staging area. We will be working on the two sides of the drainage ditch seen in the middle of the photo above. If we haven't previously provided specific directions to your build site, we will guide you to your site.

Google Maps link to Medical Clinic

<https://goo.gl/maps/7A68aiBdqSkfeto26>

32.4912555 -116.825603

Return to the States



Follow the directions in reverse order. After exiting the staging area as shown in the photo above, **turn right** onto Paseo de Las Lomas at the Roma Farmacia and drive approx. 1 mile.



Turn **Right** at the **Chevron station**.



Continue on this road for about **0.6 miles**. **Just prior to the bridge overpass**, take the exit road to the **right** of the bridge and follow it around. This will put you on the Paseo 2000 road (route 201) back toward the border.



Go straight about 4 miles – bear right at "Tijuana/San Diego" exit. This road will swing around and head back towards Otay Mesa industrial area.



Note: For those wanting to go through the Tecate border crossing, continue straight and follow the signs to Tecate Cuota/Mexicali. You're on your own for directions.



Go about 5.5 miles into the industrial area until you reach the park on the right. Continue straight ahead about 1 mile, going over the bridge, following the signs for **Garita de Otay**.



Just past the McDonalds, turn right at "Garita De Otay/Vehiculos Ligeros" intersection. Continue straight, up over the bridge until you reach the Otay Border crossing lines (standard lanes).



For those with a Global Entry/SENTRI pass, follow the signs to Bella Artes Blvd and turn right. Turn left at the 2nd traffic light onto Bella Artes boulevard. Drive about 1.5 miles on Bella Artes and watch for the border entry on the right. The SENTRI lane is in the middle. Note that all passengers in the vehicle must have a Global Entry/SENTRI pass to use these lanes and the car must be registered in the Global Entry system as well.